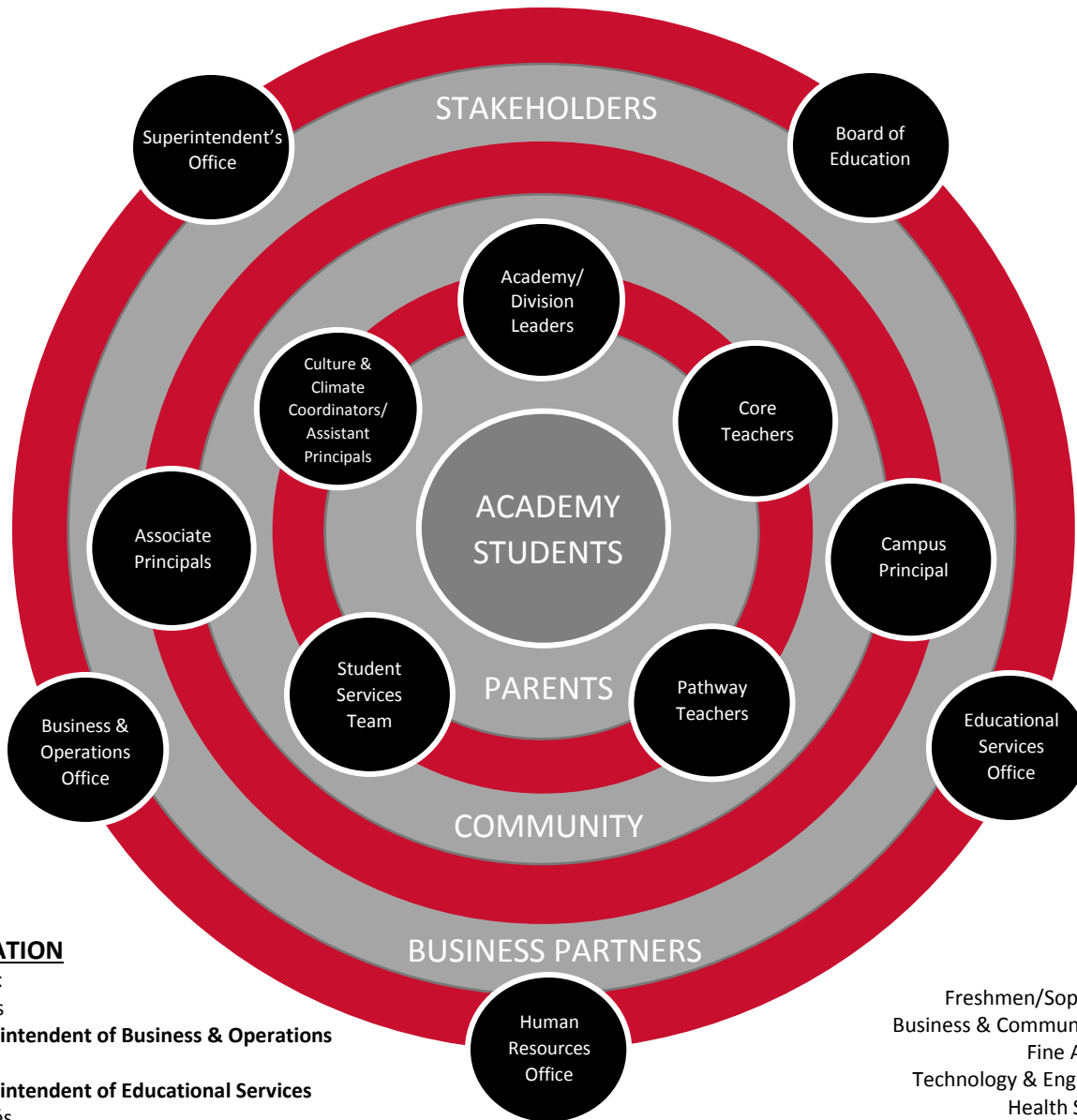


Rich Township

HIGH SCHOOL DISTRICT 227

Organizational Chart



ADMINISTRATION

Superintendent
Johnnie Thomas

Assistant Superintendent of Business & Operations
Alicia Evans

Assistant Superintendent of Educational Services
Stephen Bournés

Assistant Superintendent of Human Resources
Kim Nalls

ACADEMIES

Freshmen/Sophomore Academy
Business & Communications Academy
Fine Arts & IB Academy
Technology & Engineering Academy
Health Sciences Academy
Family and Consumer Science Academy

Principal
Larry Varn (FAC)
Janice Wells (STEM) - Interim

Associate Principals (Ed Service)
Linnea Garrett (FAC)
Carl Scott (STEM)

Associate Principal (Operations)
Dr. Tiffany Lowery

Assistant Principals of Operations & Athletics/Activities
Dr. Mark Kolkman (FAC)
Danny Savage (STEM)

Division Leader of Student Support Services
OPEN (FAC)
Terilise Harris (STEM)

Division Leader of Freshmen/Sophomore Academy
LaTonya Applewhite (FAC)
Mary Hawley (STEM)

Division Leader of Business & Communications Academy
LaTricia Varnado (FAC)

Division Leader of Fine Arts & International Baccalaureate
Kimberly Gales (FAC)

Division Leader of Technology & Engineering Academy
Jackie Stone (STEM)

Division Leader of Health, Family & Communications Academy
Robert LaFrance (STEM)

Coordinator of Culture, Climate & Communications
Keith White (FAC)
Jason Battle (FAC)
Mary Creer (FAC)
Michelle Brumfield (STEM)
Brendan McHugh (STEM)
Quincy Owens (STEM)