



# RICH TOWNSHIP HIGH SCHOOL DISTRICT 227

Focused On Students And Student Success

## COVID-19 Testing Information

Presented by: Dr. Harris and Dr. Evans

Date: January 19, 2021

# Mission and Vision

## OUR VISION

We envision a culturally relevant, innovative school district that provides a foundation of opportunities for our students to thrive.

## OUR MISSION

The mission of Rich Township High School District 227 is to sustain a focus on students and on student success.



# COVID-19 Testing

- RTHS administration would like to recommend offering COVID-19 student and staff testing to assist in the safe return to in person hybrid instruction
  - Rapid test results (15 – 20 minutes), instead of awaiting test results for days
  - Offering a COVID test at school will provide a safer environment for students and staff
  - For positive test results
    - Contact tracing can begin earlier to mitigate the spread of the virus
  - For negative test results
    - Students may have to self-quarantine/isolate at home, take an additional test, or secure an alternate diagnosis



# Agenda

- Transmission
- Symptoms
- Who Should Get Tested?
- Contact Tracing
- Process
- Next Steps
- Summary



# Transmission

- Human coronaviruses are mostly spread from an infected person to others through:
  - The air by coughing and sneezing
  - Close personal contact, such as touching or shaking hands
  - Touching an object or surface with the virus on it, then touching your mouth, nose, or eyes before washing your hands

Source: About COVID-19 | IDPH (illinois.gov)



# Symptoms

- People with COVID-19 have had a wide range of symptoms reported – ranging from mild symptoms to severe illness. Symptoms may appear 2-14 days after exposure to the virus. People with these symptoms may have COVID-19:
  - Fever or chills
  - Cough
  - Shortness of breath or difficulty breathing
  - Fatigue
  - Muscle or body aches
  - Headache
  - New loss of taste or smell
  - Sore throat
  - Congestion or runny nose
  - Nausea or vomiting
  - Diarrhea

Source: About COVID-19 | IDPH (illinois.gov)



# Fever Threshold

- Per CDC and Illinois Joint Guidance for Schools, it is recommended that schools use 100.4°F or greater as the threshold for fever.

Source: About COVID-19 | IDPH (illinois.gov)



# Who Should Test?

- People who have symptoms of COVID-19;
- People who have had close contact (within 6 feet of an infected person for a total of 15 minutes or more) with someone with confirmed COVID-19; and
- People who have been asked or referred to get testing by their health care provider, or by IDPH or your local health department.
- Individuals we have received consent to test.

Source: About COVID-19 | IDPH (illinois.gov)





# Types of Test

- Nasal test
- Results in 15-20 minutes
- Free of charge through the Illinois Department of Public Health
- \$30 per test
- Ambry COVID-19 RT-PCR Test
- The saliva test
- Results in 24-48 hours
- \$100 per test
- Very limited availability
- Availability from Ambry Genetics



# Registration and Reporting Requirements

- All COVID-19 tests and test results must be reported (positives, negatives, and indeterminants).
- Facilities that perform point of care (POC) testing ONLY must use Illinois Department of Public Health (IDPH) POC Testing Reporting Portal to fulfil COVID-19 reporting requirements for Illinois.



# Registration and Reporting Requirements

- The District must register to receive a URL to the point of care (POC) testing reporting portal that is unique to our facility and Clinical Laboratory Improvement Amendments (CLIA).
- Electronic reporting is required for all entities performing testing for COVID-19 on Illinois residents.



# Contact Tracing

- As K-12 schools resume in-person learning, case investigation and contact tracing with staff, teachers and students should be anticipated as a crucial strategy to reduce further transmission once a case is identified. Along with testing, social distancing, and vaccine (once available), these strategies help to protect the community against COVID-19.

Source: About COVID-19 | IDPH (illinois.gov)

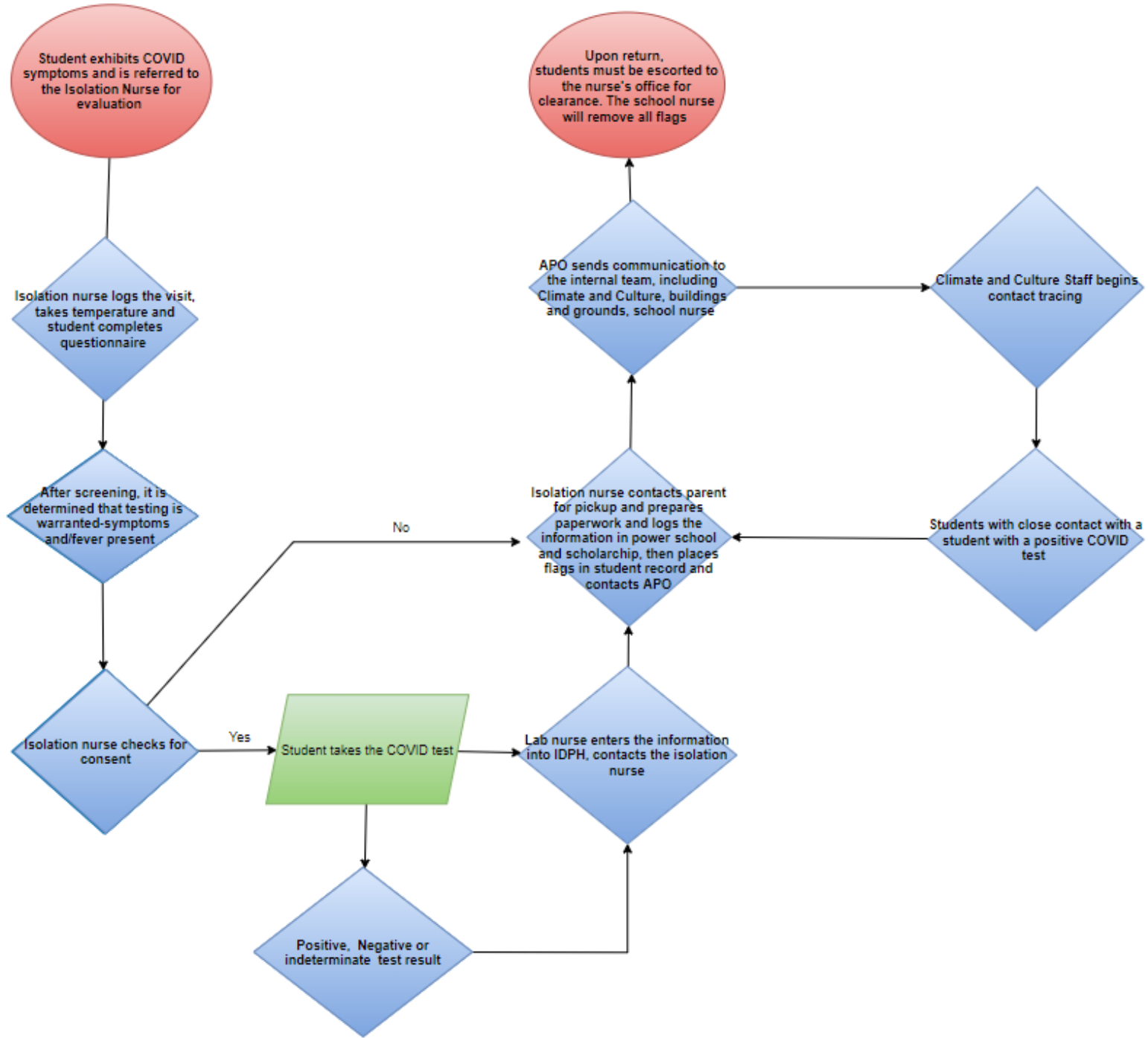


# Contact Tracing Process

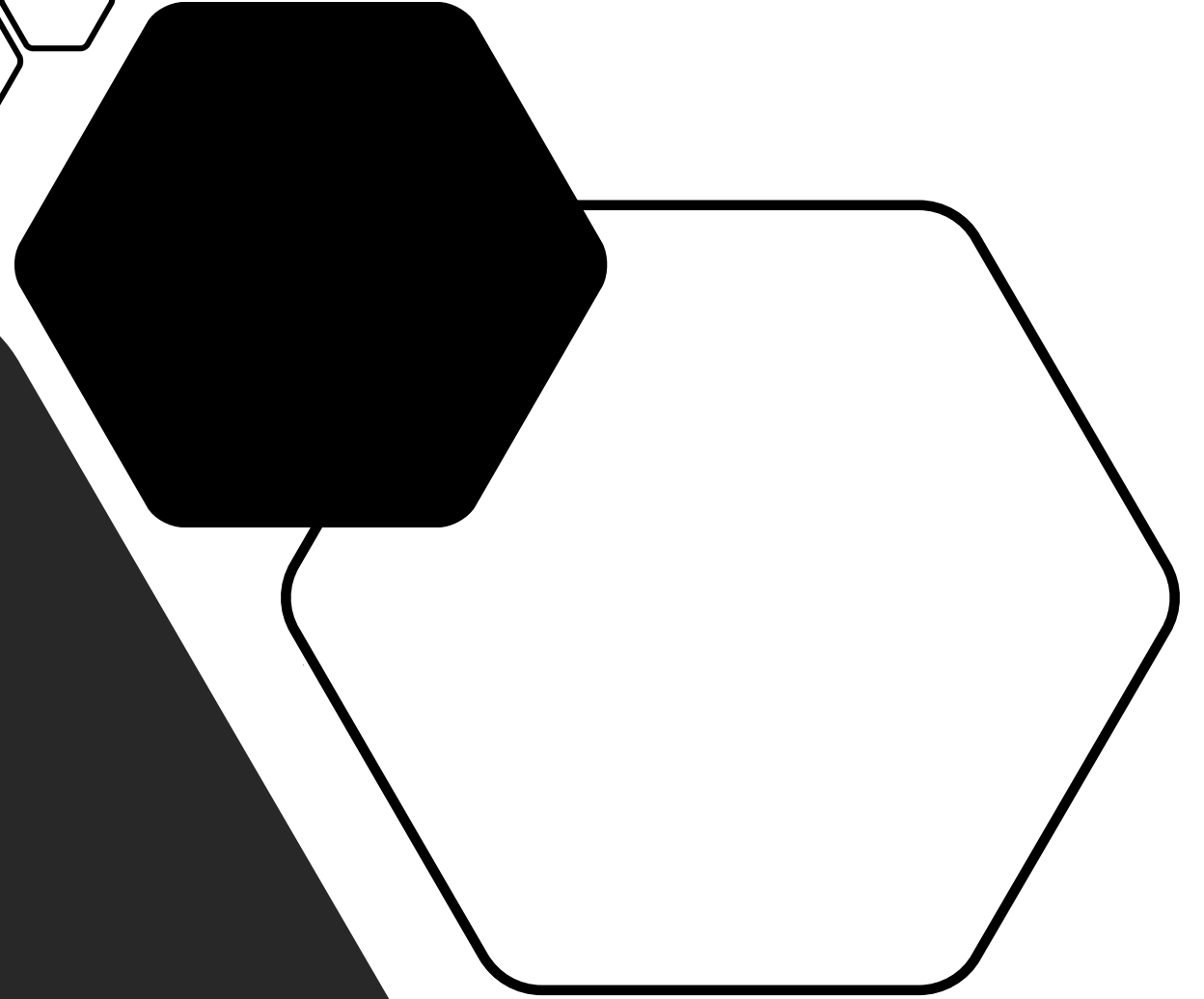
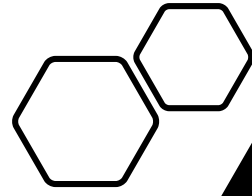
- Reaching out to people with COVID-19 to identify everyone they had close contact with during the time they may have been infectious
- Notifying contacts of their potential exposure
- Referring those contacts for testing
- Monitoring contacts for signs and symptoms of COVID-19
- Connecting contacts with services they might need to remain at home during the self-quarantine period
- Contact tracing training will be needed
- Contact tracing will be done by our climate and culture staff



# Process



Next Steps



# Next Steps – Approval of Revisions of Policy 4:180

## In-Person Attendance; Health Examination and Testing – During Times of Pandemic

- During a pandemic, the Board may offer to tests related to the pandemic, at the expense of the Board.
- Tests would be voluntary and would be offered to students or staff displaying symptoms whose parents/guardians or staff have provided written consent to such testing.

Nothing in this Policy shall limit the authority of the Board or Superintendent:

- 1) to require students or employees to provide evidence of a test at their own expense before continuing or returning to in-person attendance and instruction or
- 2) to require students and employees to comply with guidance of the Illinois Department of Public Health and other governmental health authorities and general health and safety protocols.





# Next Steps - Continued

- Communicate to stakeholders about COVID-19 testing availability
- Attain parental and staff consent
- Provide training for nursing staff
- Screen, evaluate and test symptomatic students and staff
- Report the results to the CDC and IDPH



# Summary - COVID-19 Testing

- Testing is only one of the essential interventions in the multipronged response to COVID-19 and it will be implemented along with other mitigation strategies such as:
  - Daily temperature checks
  - Daily Pre-screening questionnaire
  - Mask requirement
  - Social distancing
  - Regular filter changes to improve air quality
  - Clean facilities
  - Personal Protective Equipment



# Summary

- COVID-19 testing will be offered for students and staff that are in attendance during the school day. Non-RTHS persons will not be tested.
- No testing will be done until the Board of Education approves the policy change.



